

SmartSAFE®

A digital eVault platform for control, storage, and management of eNotes and other eAssets.

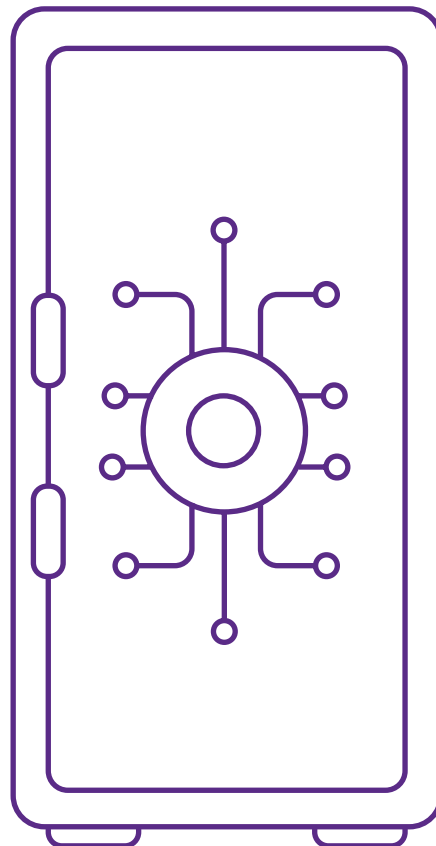
DocMagic's eVault technology enables flexible, modern and streamlined eClosing strategies. Our secure and scalable SmartSAFE® provides enterprise-level SaaS-based or on-premise solutions for managing electronic documents throughout the mortgage life cycle. With short- or long-term storage, implementing SmartSAFE® eVault technology helps to reduce cycle times, increase process efficiencies, and improve management of electronic transactions.

End-to-end workflow, storage and support for all types of files and formats.

Direct eDelivery to the MERS® eRegistry and other third-party oversight bodies.

Maintains and validates the integrity of transferable instruments.

Limitless integration options via DocMagic's Application Program Interface (API).



Manages current mortgage eNote processes as well as all other transferable records.

Documents retain a tamper-evident seal to ensure data and document integrity.

Maintains all audit trails for legal compliance, as well as the authoritative copy.

Automated reporting capabilities for every user with date and time stamp.