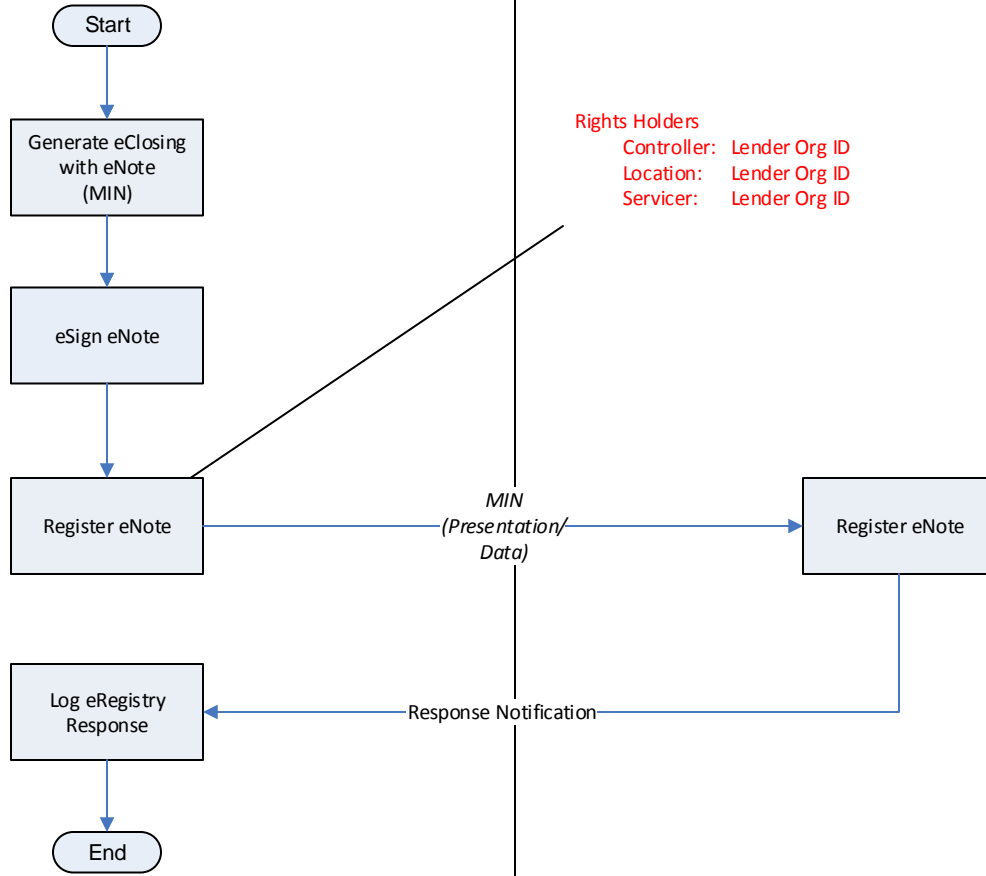


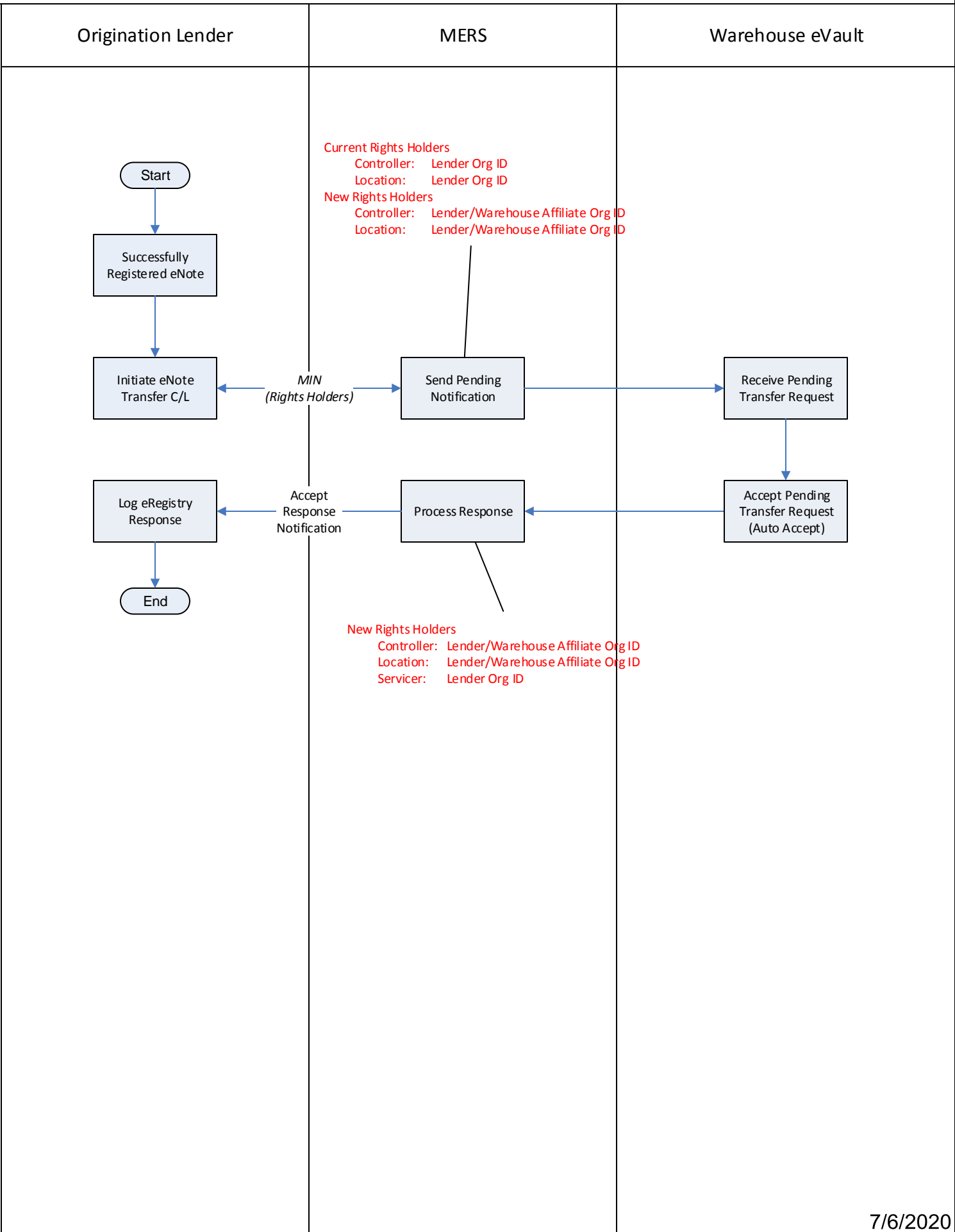
# Process Overview eRegistry: Register eNote

Origination Lender

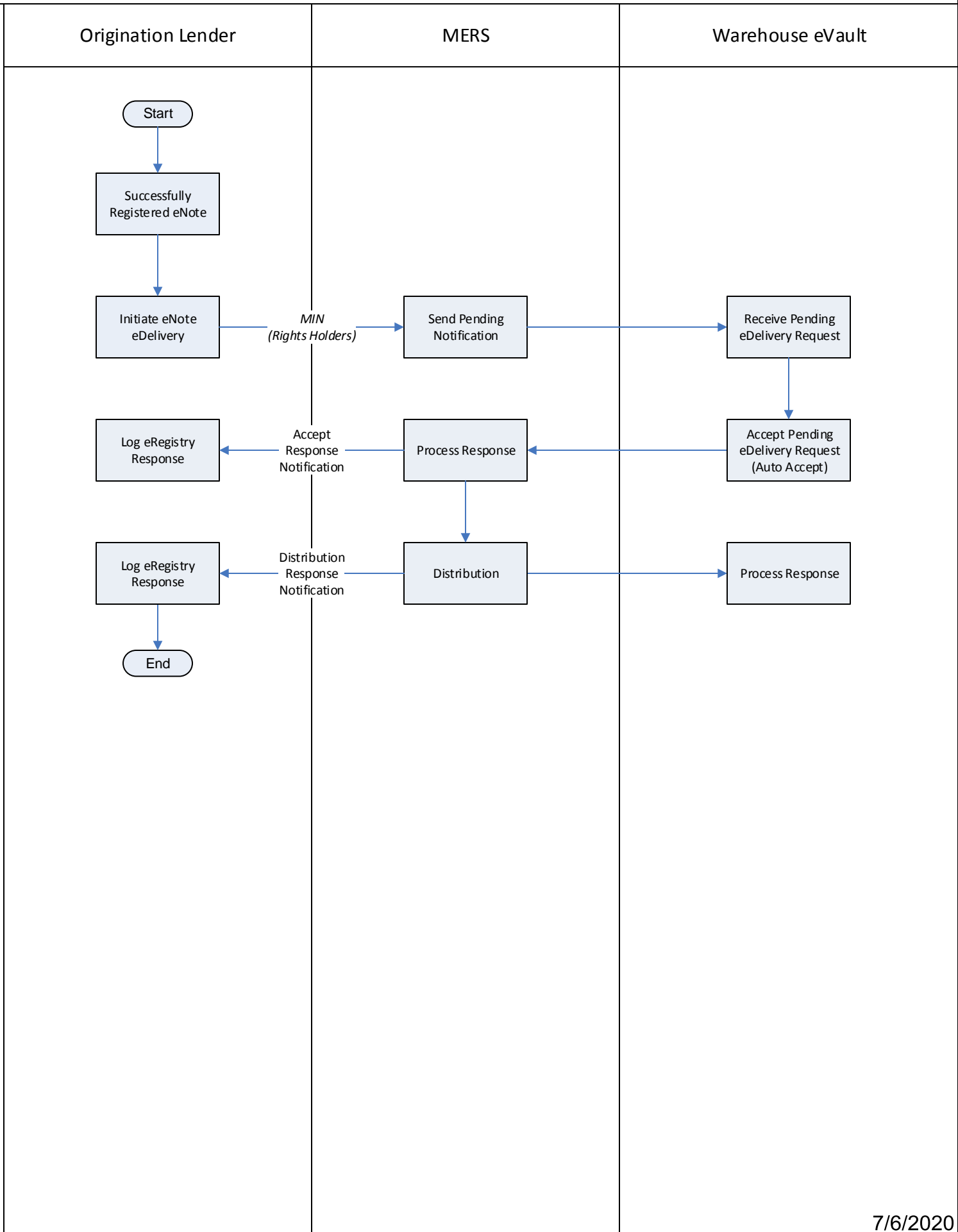
MERS



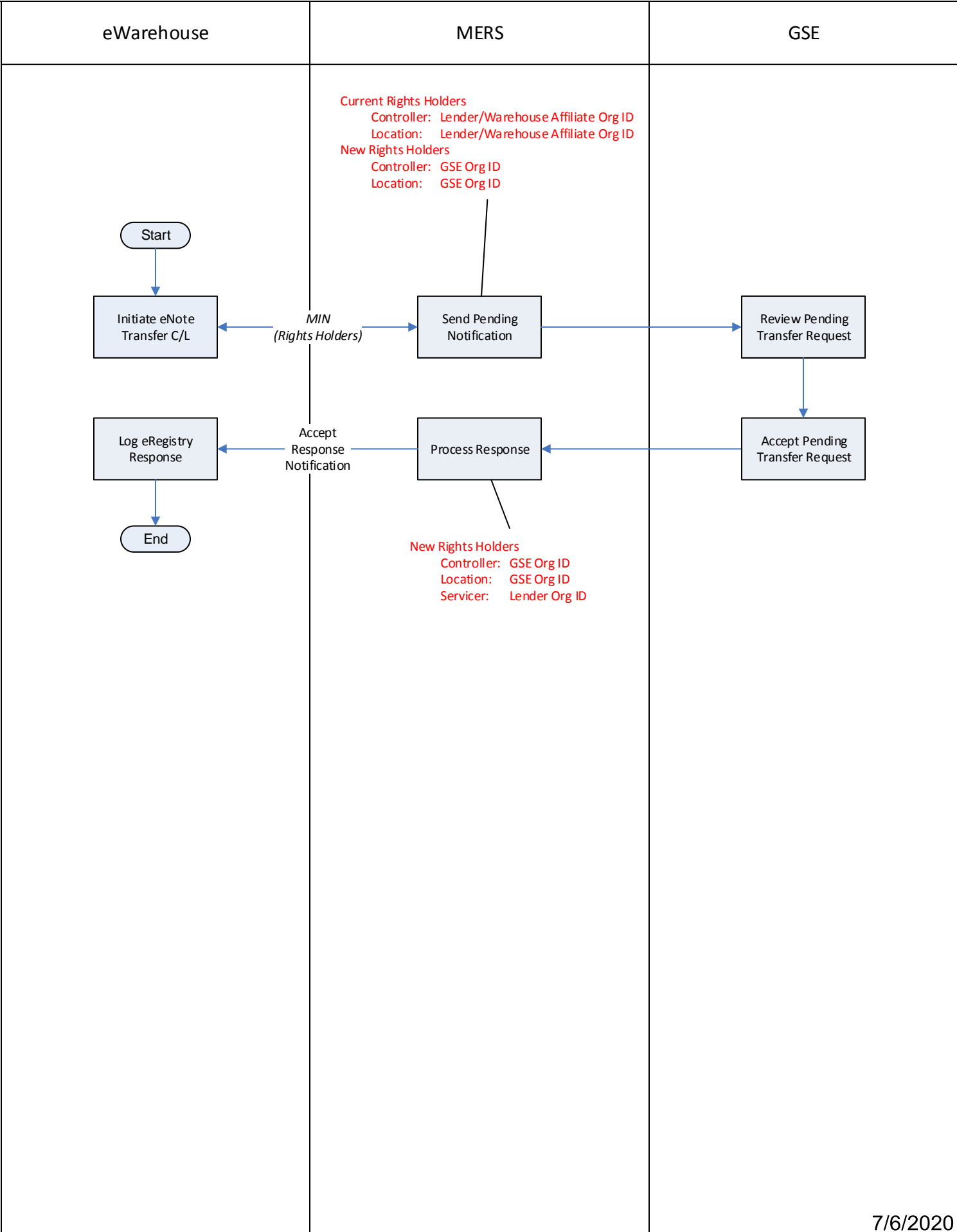
Process Overview eRegistry: **Overview – Transfer eNote Incoming**



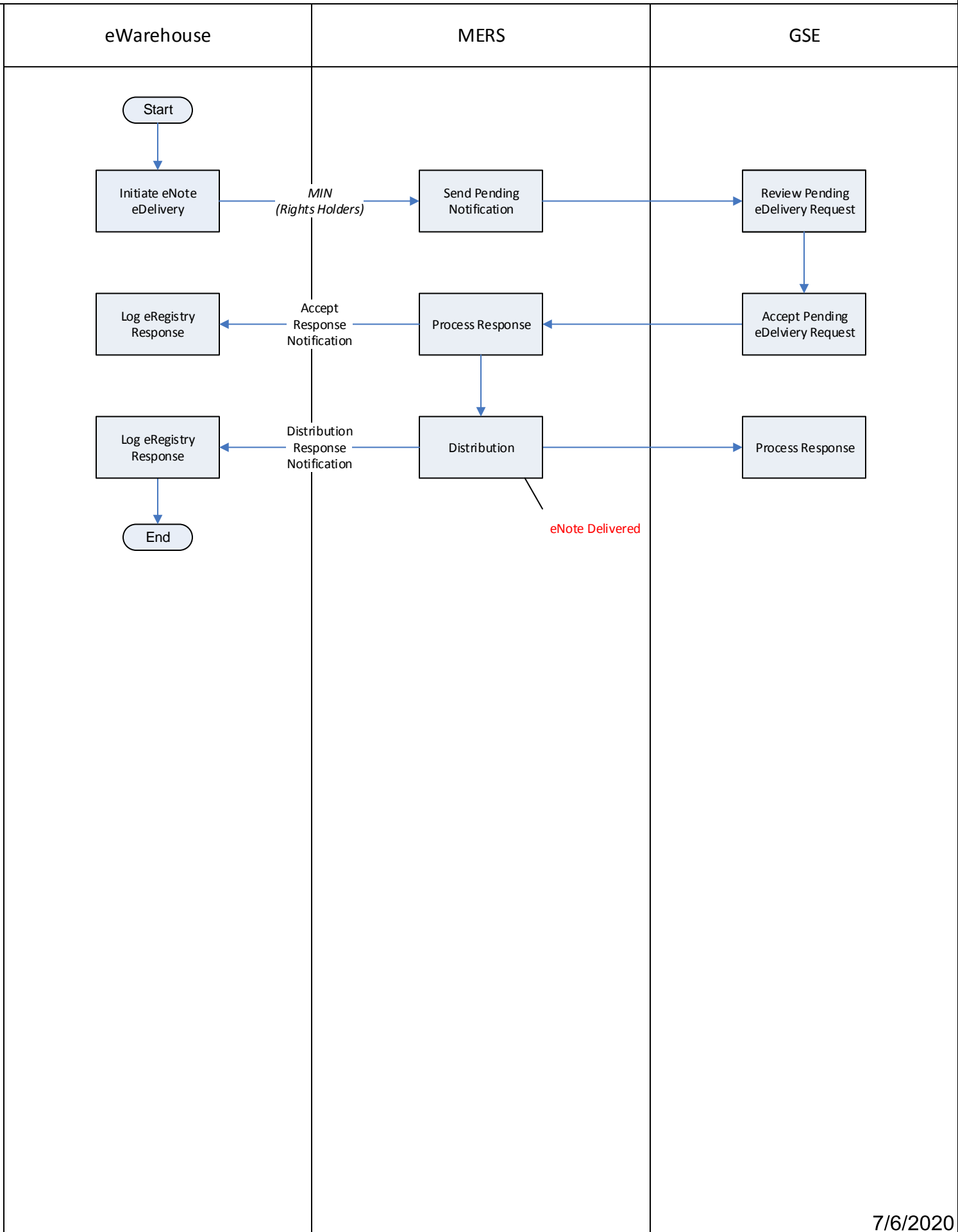
Process Overview eRegistry: **Overview – eDelivery eNote Incoming**



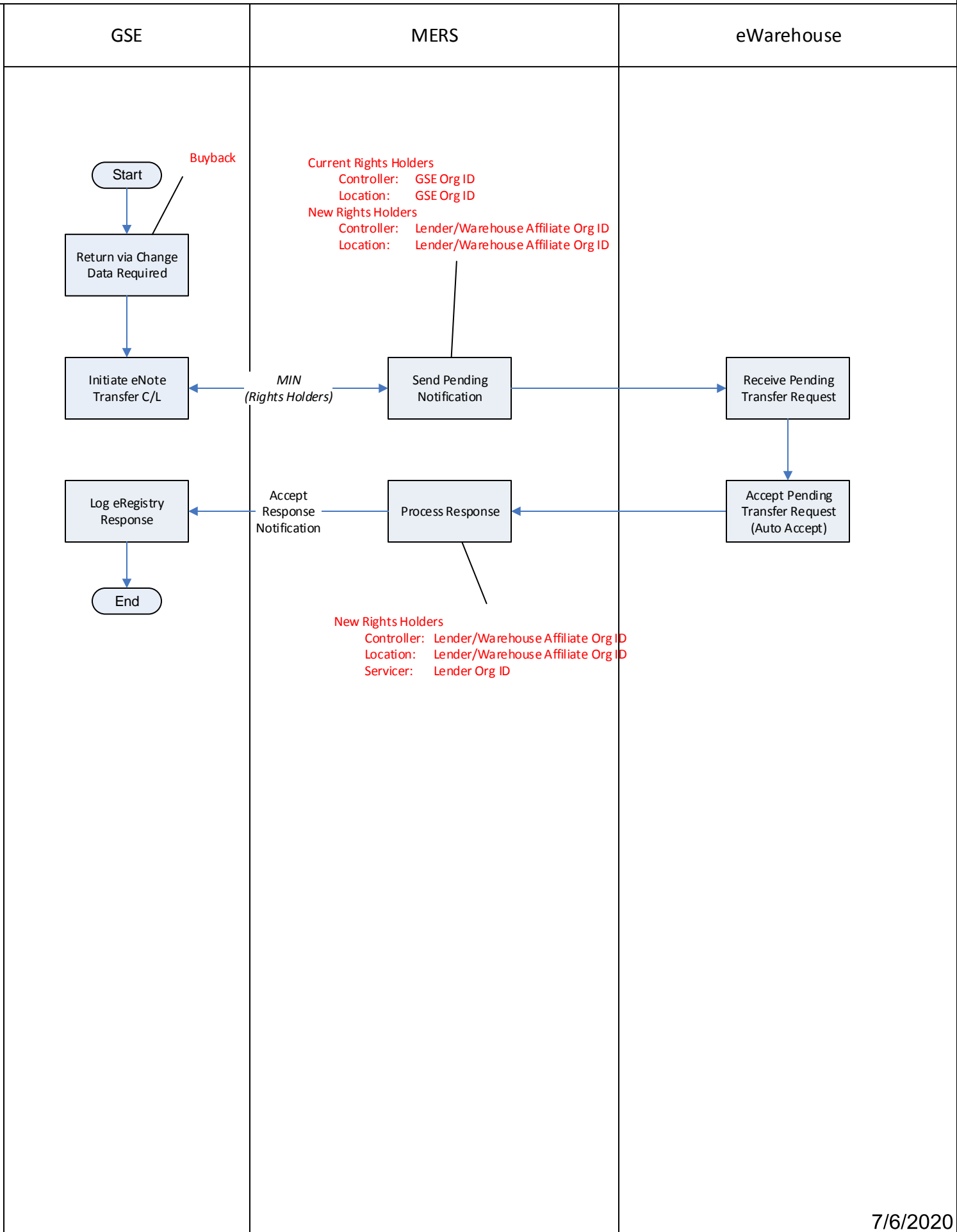
# Process Overview eRegistry: Overview – Transfer eNote Outgoing



Process Overview eRegistry: **Overview – eDelivery eNote Outgoing**



Process Overview eRegistry: **Overview – Transfer eNote eWarehouse by GSE**



# Process Overview eRegistry: Overview – Transfer eNote Outgoing

